

# MS12001 Cable Assembly Testing Software



The MS12001 software is the most widely deployed insertion loss and mandrel-free return loss measurement solution in the industry. With the MS12, it delivers accurate, reliable, and traceable results for optical cable assemblies and optical components.

Working closely with fiber optic market leaders, the MS12001 software has been tailored to accommodate critical fiber-optic testing needs. New features are continuously being added to suit new application requirements.

## Compatible Products



**MS12** Return Loss Meter



**MS4** Polarity Tester



**MS7** Optical Switch

### KEY FEATURES

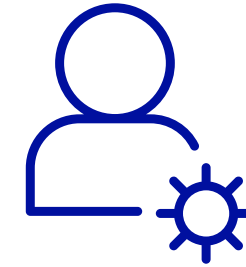
- Production Friendly
- Database storage
- EXFO IQS-3250B compatible

### APPLICATIONS

- Cable Assembly Testing
- Ribbon Fiber testing
- Single and multifiber testing

### REQUIREMENTS

- Windows 7/10
- PCIe slot
- MS Chassis

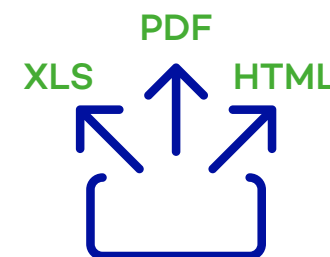


## User & Supervisor mode

With a user and supervisor mode, the supervisor can reduce user error by custom tailoring functionality to suit the specific application requirements.

## Proven Software

Globally, the MS12001 is the #1 most deployed cable assembly test software. The MS12001 has undergone consistent free software updates throughout the past decade to adapt to ever-changing application requirements while keeping reliability of operation a priority.



## Flexible Data Export

Results can automatically be printed on a label, or for further flexibility, the user may also export results as .xls, .txt, .pdf, or .html.

## Centralized Database

Using a centralized SQL database, the MS12001 can store test plans, test results & labels to synchronize all MS12001 test station data. The MS12001 can also be configured as a stand alone station with its own dedicated SQL database.

